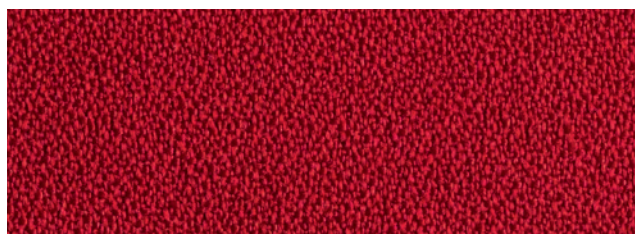


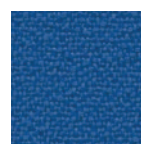
# AL LEIRIA

1. CREP / CREPE
2. 100% POLIESTERE / 100% POLYESTER
3. 350 GR./MTL / 350 GR./LM
4. CLASSE 1 (UNI 9175) EN 1021 (PARTI 1-2)  
CLASS 1 (UNI 9175) EN 1021 (PART 1-2)
5. 150.000 CICLI (UNI EN ISO 12947)  
150.000 TURNS (UNI EN ISO 12947)

## CURA E MANUTENZIONE CARE AND MAINTENANCE



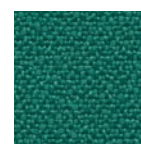
13AL02



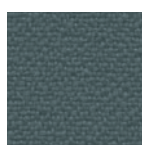
13AL26



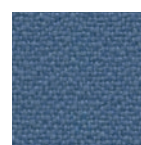
13AL07



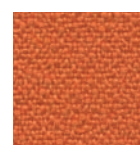
13AL25



13AL12



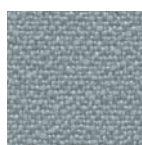
13AL06



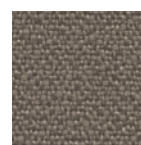
13AL20



13AL05



13AL21

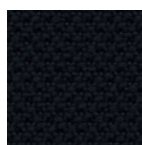
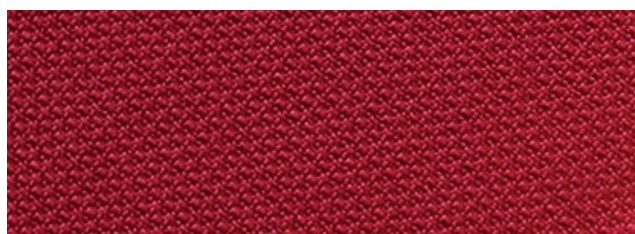


13AL03

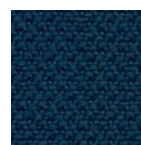
# AR RADIO

1. TELA / CANVAS
2. 100% POLIESTERE FR / 100% POLYESTER FR
3. 450 GR./MTL / 450 GR./LM
4. EN 1021 (PARTI 1-2)  
EN 1021 (PART 1-2)
5. 100.000 CICLI (UNI EN ISO 12947)  
100.000 TURNS (UNI EN ISO 12947)

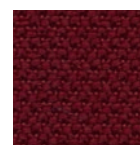
## CURA E MANUTENZIONE CARE AND MAINTENANCE



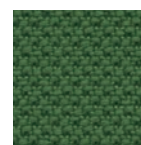
13AR02



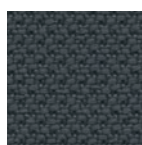
13AR36



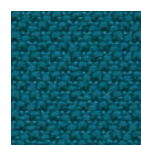
13AR34



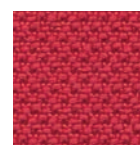
13AR35



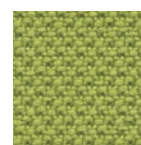
13AR52



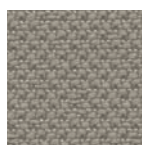
13AR26



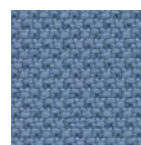
13AR17



13AR45



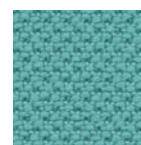
13AR13



13AR16



13AR40



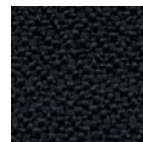
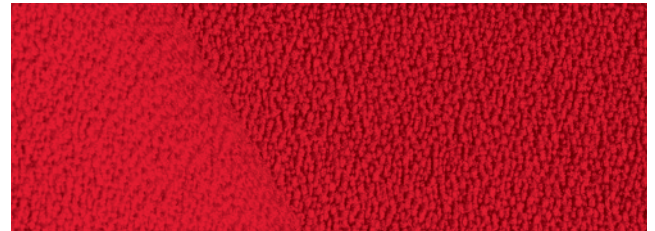
13AR25

## PELLI E TESSUTI FABRICS AND LEATHERS

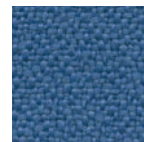
### BB BELEM

1. TESSUTO ANTIBATTERICO / ANTIBACTERIAL FABRIC
2. 100% POLIESTERE TREVIRA CS / 100% POLYESTER TREVIRA CS
3. 490 GR./MTL / 490 GR./LM
4. CLASSE 1 (UNI 9175)  
CLASS 1 (UNI 9175)
5. 100.000 CICLI (UNI EN ISO 12947)  
100.000 TURNS (UNI EN ISO 12947)

#### CURA E MANUTENZIONE CARE AND MAINTENANCE



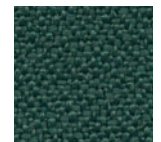
13BB02



13BB26



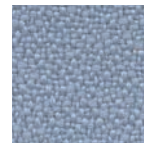
13BB07



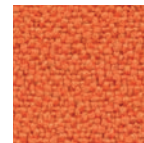
13BB35



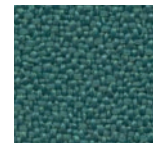
13BB31



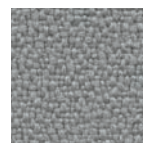
13BB56



13BB20



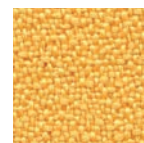
13BB75



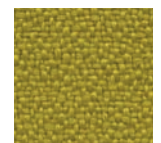
13BB12



13BB03



13BB30

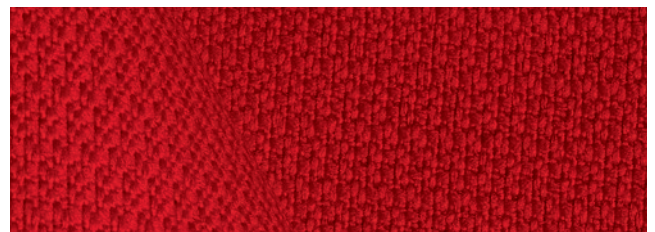


13BB15

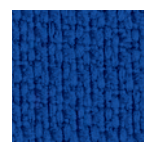
### BL LAGOS

1. TESSUTO A INTRECCI / VEAVES FABRIC
2. 100% POLIESTERE FR RICICLATO  
100% POLYESTER FR RECYCLED
3. 470 GR./MTL / 470 GR./LM
4. CLASSE 1 (UNI 9175) EN 1021 (PARTI 1-2)  
CLASS 1 (UNI 9175) EN 1021 (PART 1-2)
5. 50.000 CICLI (UNI EN ISO 12947)  
50.000 TURNS (UNI EN ISO 12947)

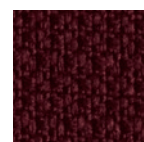
#### CURA E MANUTENZIONE CARE AND MAINTENANCE



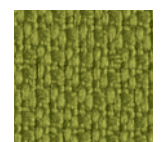
13BL02



13BL26



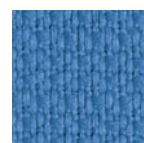
13BL34



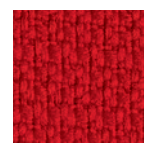
13BL05



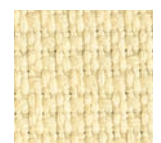
13BL21



13BL16



13BL07



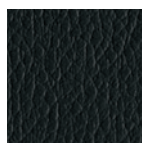
13BL10

# BR RIO

1. SIMILPELLE ANTIBATTERICA / VINYL ANTIBACTERIAL TREATMENT
2. 91% PVC - 9% POLIAMMIDE  
91% PVC - 9% POLYAMIDE
3. 994 GR./MTL / 994 GR./LM
4. CLASSE 1 (UNI 9175)  
CLASS 1 (UNI 9175)
5. UNI 4818 15 (METODO A)  
UNI 4818 15 (METHOD A)

PRODOTTO PRIVO DI FTALATI / PHTHALATE FREE

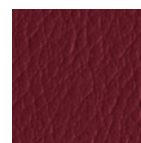
## CURA E MANUTENZIONE CARE AND MAINTENANCE



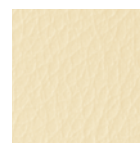
13BR02



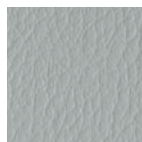
13BR06



13BR34



13BR10



13BR21



13BR16



13BR07

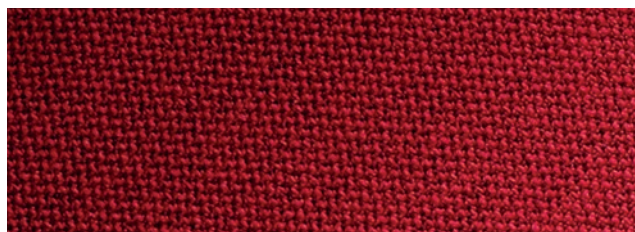


13BR00

# CE ERA

1. TELA / CANVAS
2. 100% POLIESTERE  
100% POLYESTER
3. 490 GR./MTL / 490 GR./LM
4. EN 1021 (PARTI 1-2)  
EN 1021 (PART 1-2)
5. 10.000 CICLI (UNI EN ISO 12947)  
100.000 TURNS (UNI EN ISO 12947)

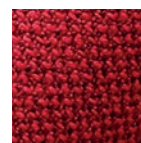
## CURA E MANUTENZIONE CARE AND MAINTENANCE



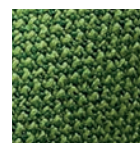
13CE19



13CE06



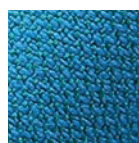
13CE07



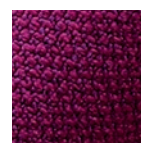
13CE15



13CE12



13CE16



13CE09



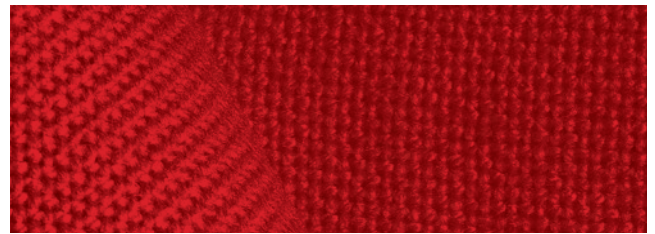
13CE30

## PELLI E TESSUTI FABRICS AND LEATHERS

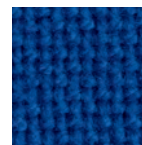
### CT TREVI

1. TELA. CANVAS
2. 100% POLIESTERE TREVIRA CS  
100% POLYESTER TREVIRA CS
3. 630 GR./MTL / 630 GR./LM
4. CLASSE 1 (UNI 9175) EN 1021 (PARTI 1-2)  
CLASS 1 (UNI 9175) EN 1021 (PART 1-2)
5. 100.000 CICLI (UNI EN ISO 12947)  
100.000 TURNS (UNI EN ISO 12947)

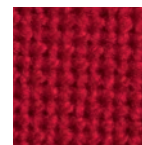
#### CURA E MANUTENZIONE CARE AND MAINTENANCE



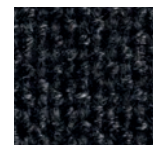
13CT02



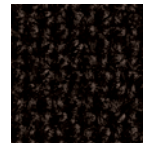
13CT16



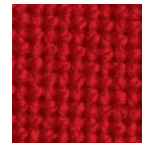
13CT47



13CT32



13CT03



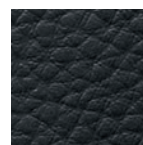
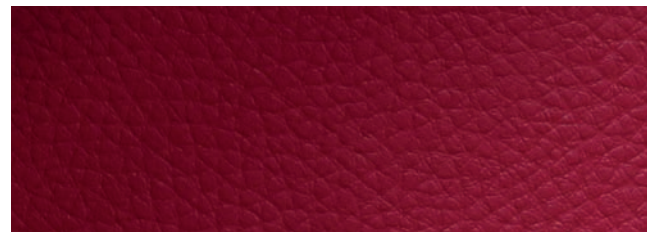
13CT07

### CR MERIDA IGNIFUGO

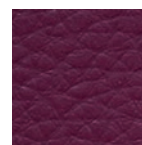
1. SIMILPELLE TRASPIRANTE / BREATHABLE VINYL
2. 41% POLIURETANO - 18% POLIESTERE - 41% COTONE  
41% POLYURETHANE - 18% POLYESTER - 41% COTTON
3. 560 GR./MTL / 560 GR./LM
4. CLASSE 1 (UNI 9175)  
CLASS 1 (UNI 9175)
5. 100.000 CICLI (UNI EN ISO 12947)  
100.000 TURNS (UNI EN ISO 12947)

PRODOTTO PRIVO DI FTALATI / PHTHALATE FREE

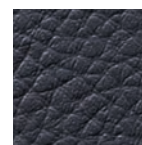
#### CURA E MANUTENZIONE CARE AND MAINTENANCE



13CR32



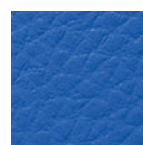
13CR44



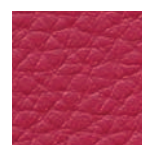
13CR53



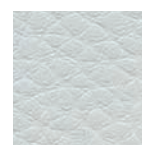
13CR52



13CR66



13CR67

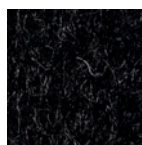
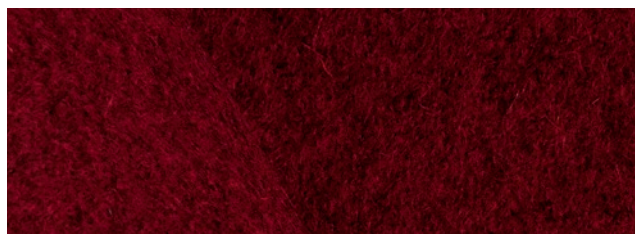


13CR11

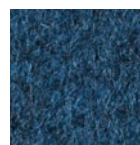
# DB BOGOTÀ

1. LANA / WOOL
2. 100% LANA  
100% WOOL
3. 825 GR./MTL / 825 GR./LM
4. EN 1021 (PARTI 1-2)  
EN 1021 (PART 1-2)
5. 60.000 CICLI (UNI EN ISO 12947)  
60.000 TURNS (UNI EN ISO 12947)

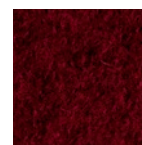
## CURA E MANUTENZIONE CARE AND MAINTENANCE



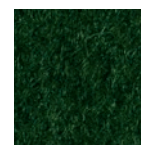
13DB02



13DB06



13DB04



13DB05



13DB12



13DB09



13DB30



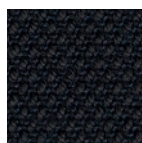
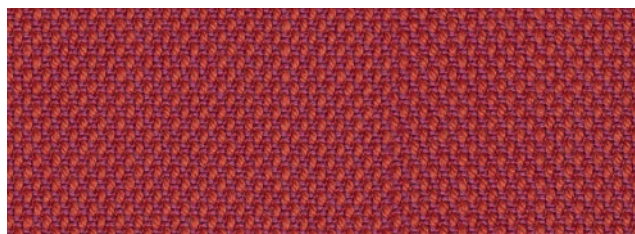
13DB15

# ET STEELCUT TRIO 3

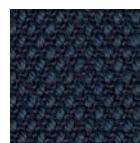
by KVADRAT

1. LANA / WOOL
2. 90% LANA - 10% NYLON  
90% WOOL - 10% NYLON
3. 770 GR./MTL / 770 GR./LM
4. CLASSE 1 (UNI 9175) EN 1021 (PARTI 1-2)  
CLASS 1 (UNI 9175) EN 1021 (PART 1- 2)
5. 100.000 CICLI (UNI EN ISO 12947)  
100.000 TURNS (UNI EN ISO 12947)

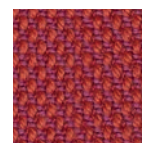
## CURA E MANUTENZIONE CARE AND MAINTENANCE



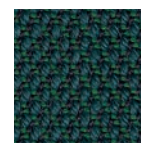
13ET02



13ET36



13ET07



13ET35



13ET08



13ET03

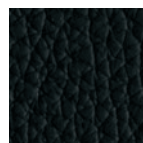
## PELLI E TESSUTI FABRICS AND LEATHERS

# EP PELLE NATURALE

1. VERA PELLE BOVINA, CONCIATA AL CROMO, TINTA IN BOTTE ALL'ANILINA, SMERIGLIATA E RIFINITA CON RESINE POLIURETANICHE / OX HIDES, CHROME TANNAGE, ANILINE-DYED, BUFFED AND FINISHED WITH POLYURETHANE RESINS.
6. 0.9 / 1.0 MM.

AVVERTENZA: LE IRREGOLARITÀ NATURALI DELLA PELLE, PUNTURE D'INSETTI, PICCOLE CICATRICI E VARIAZIONI DI COLORE CONFERMANO L'AUTENTICITÀ DEL MATERIALE, PERTANTO NON SONO MOTIVO DI RECLAMO.  
NOTICE: NATURAL FEATURES SUCH AS INSECT BITES, SMALL DEFORMITIES AND COLOR SHADING CONFIRM THE LEATHER'S AUTHENTIC CHARACTER AND ARE NOT GROUNDS FOR COMPLAINT.

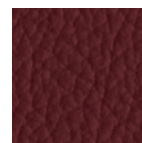
### CURA E MANUTENZIONE CARE AND MAINTENANCE



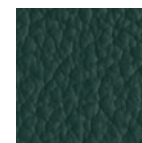
13EP02



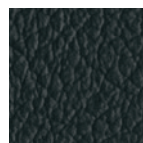
13EP06



13EP34



13EP05



13EP11



13EP17



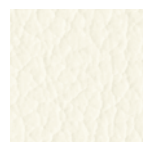
13EP07



13EP10



13EP23



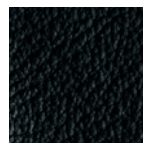
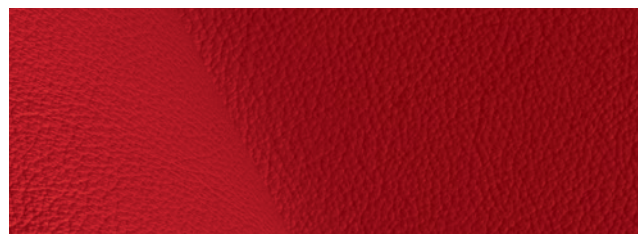
13EP00

# FP PELLE EXTRA

1. VERA PELLE BOVINA FIORE, CONCIATA AL CROMO, TINTA IN BOTTE ALL'ANILINA, GRANA NATURALE / OX HIDES, CHROME TANNAGE, ANILINE-DYED, NATURAL GRAIN.
6. 1.3 / 1.5 MM

AVVERTENZA: LE IRREGOLARITÀ NATURALI DELLA PELLE, PUNTURE D'INSETTI, PICCOLE CICATRICI E VARIAZIONI DI COLORE CONFERMANO L'AUTENTICITÀ DEL MATERIALE, PERTANTO NON SONO MOTIVO DI RECLAMO.  
NOTICE: NATURAL FEATURES SUCH AS INSECT BITES, SMALL DEFORMITIES AND COLOR SHADING CONFIRM THE LEATHER'S AUTHENTIC CHARACTER AND ARE NOT GROUNDS FOR COMPLAINT.

### CURA E MANUTENZIONE CARE AND MAINTENANCE



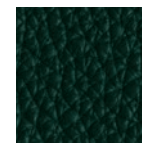
13FP32



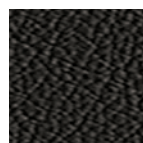
13FP06



13FP04



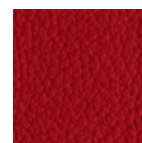
13FP05



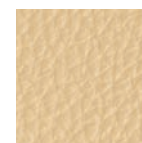
13FP11



13FP03



13FP07



13FP28



13FP12



13FP10

## SUPERFICI SURFACES

### PLASTICA PLASTIC

\*

1. POLIPROPILENE O POLIAMMIDE,  
TRATTAMENTO SUPERFICIALE GOFRATO  
ANTIGRAFFIO.  
POLYPROPYLENE OR POLYAMIDE,  
ANTI-SCRATCH EMBOSSED FINISH.
7. UNI 10782

#### CURA E MANUTENZIONE CARE AND MAINTENANCE



NERO  
BLACK



GRIGIO  
GREY RAL 7040



BIANCO  
WHITE RAL 9003

### PLASTICA IGNIFUGA FIREPROOF PLASTIC

\*\*

1. POLIPROPILENE FR CARICATO CON FV.  
POLYPROPYLENE FR WITH FV.
7. CLASSE 1 (UNI 9175) /  
CLASS 1 (UNI 9175)

#### CURA E MANUTENZIONE CARE AND MAINTENANCE



ANTRACITE  
ANTHRACITE



TORTORA  
DOVE GREY RAL 1019



BIANCO  
WHITE RAL 9003



GRIGIO-BLU AVIO  
AZURE-GREY RAL 5014



ROSSO MARRONE  
RED BROWN RAL 8029



VERDE OLIVA  
OLIVE GREEN RAL 6003

### PLASTICA PCR PCR PLASTIC

\*\*

1. POLIPROPILENE DA RICICLO  
POST CONSUMO  
POST-CONSUMER RECYCLED  
POLYPROPYLENE
7. UNI 10782

#### CURA E MANUTENZIONE CARE AND MAINTENANCE



GRIGIO CEMENTO  
CONCRETE GREY RAL 9006

## CROMATURA METALLO METAL CHROMIUM PLATING

1. TRATTAMENTO GALVANICO  
CON APPLICAZIONE DI NICHEL E CROMO,  
SPESSORE 30/50 µ, FINITURA LUCIDA.  
NICKEL AND CHROMIUM PLATING FIXED  
WITH GALVANIC TREATMENT, THICKNESS  
30/50 µ, GLOSSY FINISH.
7. UNI 10782

### CURA E MANUTENZIONE CARE AND MAINTENANCE



CROMATO / CHROMED

## VERNICIATURA METALLO METAL COATING

\*

1. POLVERI EPOSSI-POLIESTERE  
TERMOINDURENTI APPLICATE  
ELETTROSTATICAMENTE, SPESSORE 70/90 µ,  
GLOSS 2-10, FINITURA BUCCIATA  
ANTIGRAFFIO.  
EPOXY-POLYESTER THERMOSETTING  
POWDERS ELECTROSTATICALLY FIXED,  
THICKNESS 70/90 µ, GLOSS 2-10,  
ANTI-SCRATCH EMBOSSED FINISH.
7. UNI EN ISO 9227

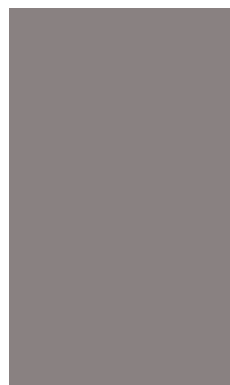
### CURA E MANUTENZIONE CARE AND MAINTENANCE



NERO  
BLACK



GRIGIO ARGENTO  
SILVER GREY RAL 9006



TORTORA  
DOVE GREY RAL 1019



BIANCO  
WHITE RAL 9016



BRONZO  
BRONZE

### NOTE NOTES

\* I colori disponibili per ogni linea di prodotto sono elencati nel catalogo generale e nel listino prezzi / The available colours for each product line are listed in the general catalogue and in the price list

\*\* Colori disponibili solo per serie LIBERA LI/LC e serie LIBERA LP/LS / Colours available only for line LIBERA LI/LC and line LIBERA LP/LS