

# HERITAGE AND INNOVATION

 **VAGHI**

TESSUTI  
FABRICS

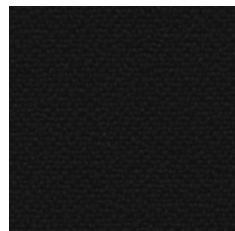


## AL LEIRIA

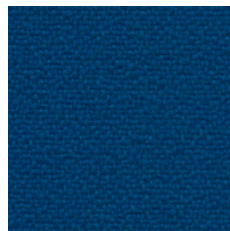
CAT. A

1. TESSUTO CREP RICICLATO  
RECYCLED FABRIC
2. 100% POLIESTERE FR RICICLATO  
100% POLYESTER FR RECYCLED
3. 350 GR./MTL  
350 GR./LM
4. CLASSE 1 (UNI 9175) EN 1021 (PARTI 1-2)  
CLASS 1 (UNI 9175) EN 1021 (PART 1-2)
5. 150.000 CICLI (UNI EN ISO 12947)  
150.000 TURNS (UNI EN ISO 12947)

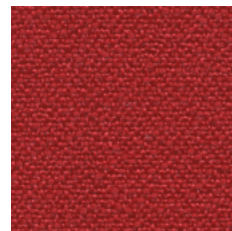
### CURA E MANUTENZIONE CARE AND MAINTENANCE



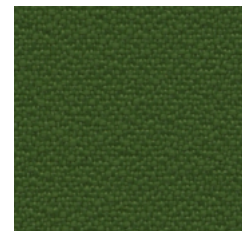
13AL02



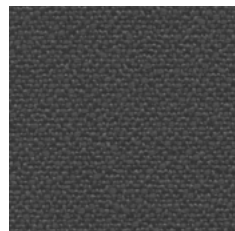
13AL36



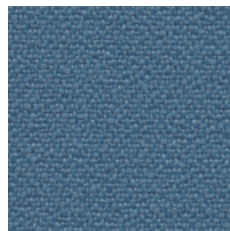
13AL07



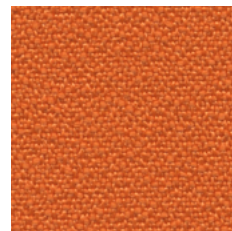
13AL35



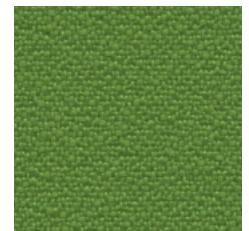
13AL12



13AL16



13AL20



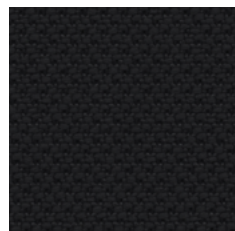
13AL05



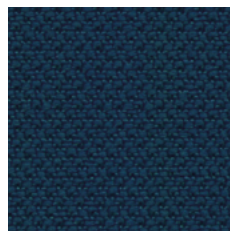
13AL41



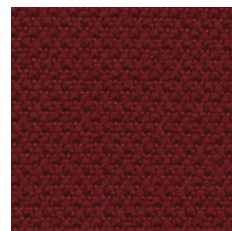
13AL13



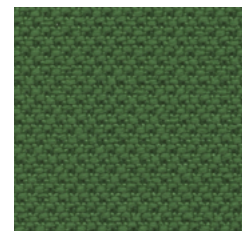
13AR02



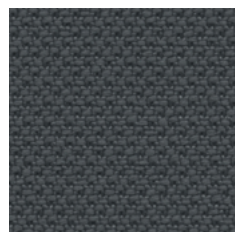
13AR36



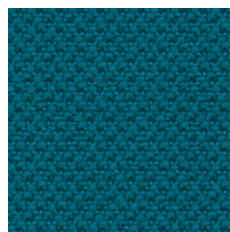
13AR34



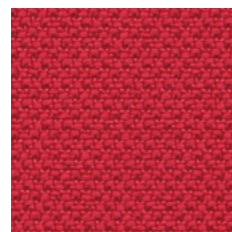
13AR35



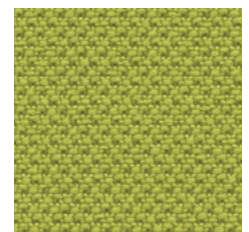
13AR52



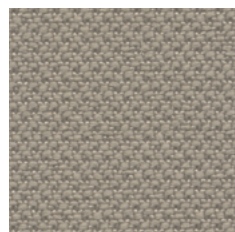
13AR26



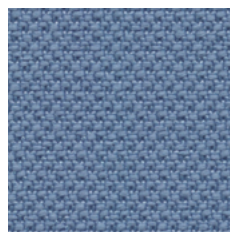
13AR17



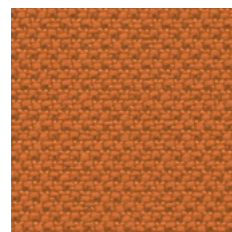
13AR45



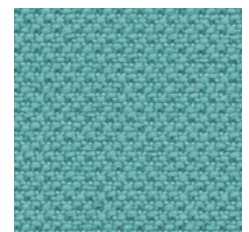
13AR13



13AR16



13AR40



13AR25

## AR RADIO

CAT. A

1. TELA  
CANVAS
2. 100% POLIESTERE FR  
100% POLYESTER FR
3. 450 GR./MTL  
450 GR./LM
4. EN 1021 (PARTI 1-2)  
EN 1021 (PART 1-2)
5. 100.000 CICLI (UNI EN ISO 12947)  
100.000 TURNS (UNI EN ISO 12947)

### CURA E MANUTENZIONE CARE AND MAINTENANCE





**BB BELEM** 

CAT. B

1. TESSUTO CREP RICICLATO  
RECYCLED FABRIC
2. 100% POLIESTERE FR RICICLATO  
100% POLYESTER FR RECYCLED
3. 390 GR./MTL  
390 GR./LM
4. CLASSE 1 IM (UNI 9175) EN 1021 (PARTI 1-2)  
CLASS 1 IM (UNI 9175) EN 1021 (PART 1-2)
5. 120.000 CICLI (UNI EN ISO 12947)  
120.000 TURNS (UNI EN ISO 12947)

**CURA E MANUTENZIONE**  
CARE AND MAINTENANCE

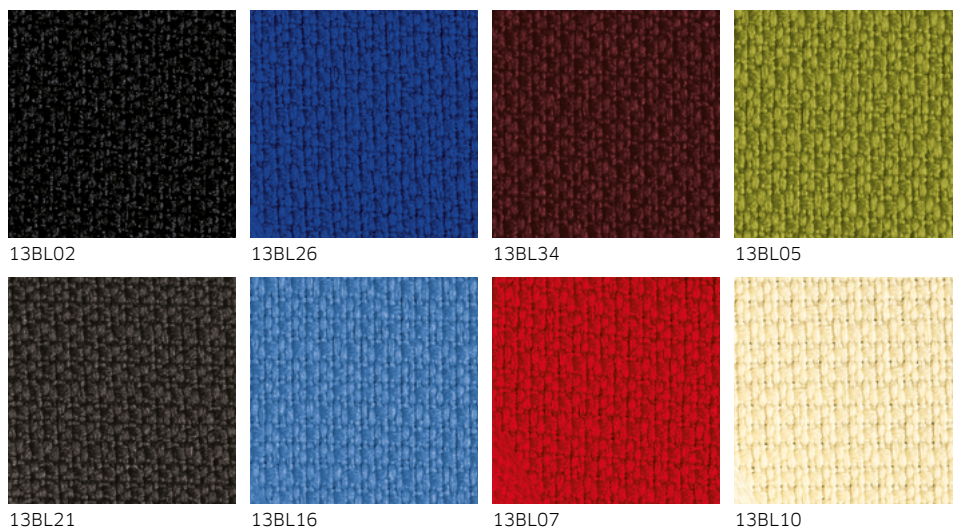


**BL LAGOS** 

CAT. B

1. TESSUTO A INTRECCI  
WEAVE FABRIC
2. 100% POLIESTERE FR RICICLATO  
100% POLYESTER FR RECYCLED
3. 470 GR./MTL  
470 GR./LM
4. CLASSE 1 (UNI 9175) EN 1021 (PARTI 1-2)  
CLASS 1 (UNI 9175) EN 1021 (PART 1-2)
5. 50.000 CICLI (UNI EN ISO 12947)  
50.000 TURNS (UNI EN ISO 12947)

**CURA E MANUTENZIONE**  
CARE AND MAINTENANCE

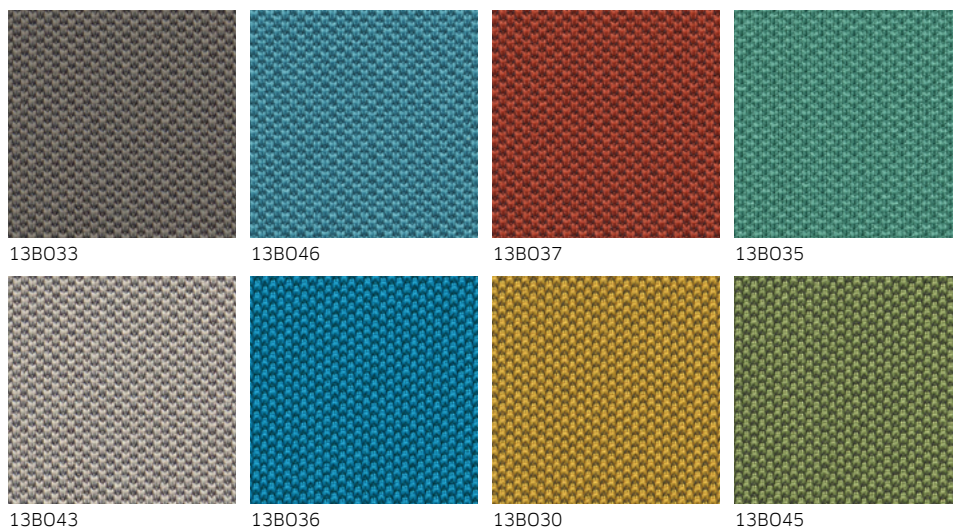


**BO OPORTO** 

CAT. B

1. TESSUTO RICICLATO A MAGLIA  
KNITTED RECYCLED FABRIC
2. 100% POLIESTERE FR RICICLATO  
100% POLYESTER FR RECYCLED
3. 525 GR./MTL  
525 GR./LM
4. CLASSE 1 IM (UNI 9175) EN 1021 (PARTI 1-2)  
CLASS 1 IM (UNI 9175) EN 1021 (PART 1-2)
5. 100.000 CICLI (UNI EN ISO 12947)  
100.000 TURNS (UNI EN ISO 12947)

**CURA E MANUTENZIONE**  
CARE AND MAINTENANCE



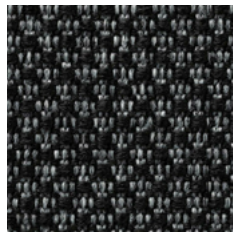


**CN NORFOLK** 

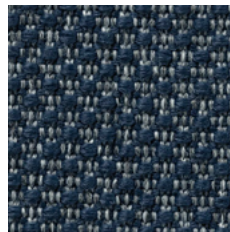
CAT. C

1. TESSUTO RICICLATO A NIDO D'APE  
ALL-OVER GRAPHIC GRID RECYCLED FABRIC
2. 100% POLIESTERE FR RICICLATO  
100% POLYESTER FR RECYCLED
3. 624 GR./MTL  
624 GR./LM
4. CLASSE 1 IM (UNI 9175) EN 1021 (PARTI 1-2)  
CLASS 1 IM (UNI 9175) EN 1021 (PART 1-2)
5. 70.000 CICLI (UNI EN ISO 12947)  
70.000 TURNS (UNI EN ISO 12947)

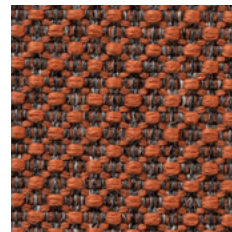
**CURA E MANUTENZIONE**  
CARE AND MAINTENANCE



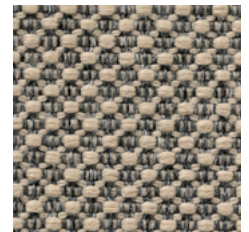
13CN12



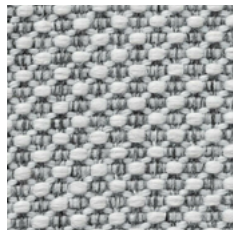
13CN26



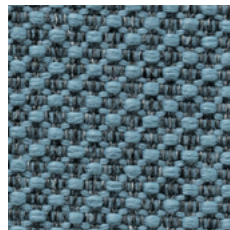
13CN17



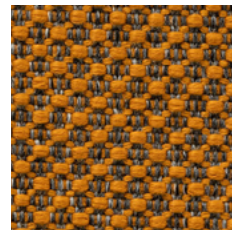
13CN13



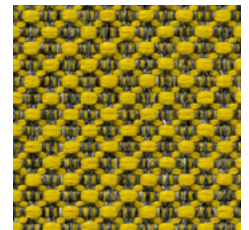
13CN21



13CN16



13CN20



13CN30

**CT TREVI** 

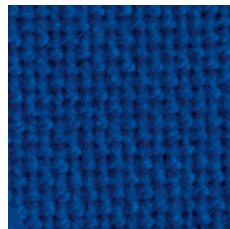
CAT. C

1. TELA  
CANVAS
2. 100% POLIESTERE TREVIRA CS  
100% POLYESTER TREVIRA CS
3. 630 GR./MTL  
630 GR./LM
4. CLASSE 1 (UNI 9175) EN 1021 (PARTI 1-2)  
CLASS 1 (UNI 9175) EN 1021 (PART 1-2)
5. 150.000 CICLI (UNI EN ISO 12947)  
150.000 TURNS (UNI EN ISO 12947)

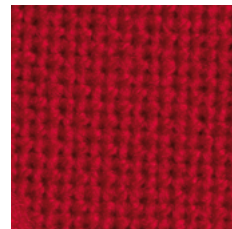
**CURA E MANUTENZIONE**  
CARE AND MAINTENANCE



13CT02



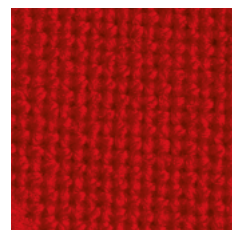
13CT16



13CT47



13CT32



13CT07



## DB BOGOTÀ MELANGE

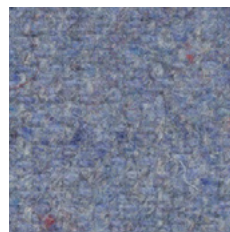
CAT. D

1. MISTO LANA CON 50% FIBRE RICICLATE  
WOOL BLEND WITH 50% OF RECYCLED FIBRES
2. 75% LANA - 20% POLIAMMIDE -  
5% ALTRE FIBRE  
75% WOOL - 20% POLYAMIDE -  
5% OTHER FIBRES
3. 590 GR./MTL  
590 GR./LM
4. CLASSE 1 IM (UNI 9175) EN 1021 (PARTI 1-2)  
CLASS 1 IM (UNI 9175) EN 1021 (PART 1-2)
5. 100.000 CICLI (UNI EN ISO 12947)  
100.000 TURNS (UNI EN ISO 12947)

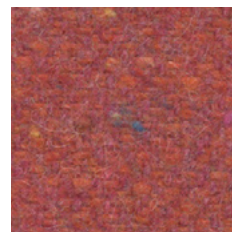
### CURA E MANUTENZIONE CARE AND MAINTENANCE



13DB21



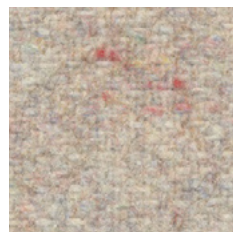
13DB16



13DB20



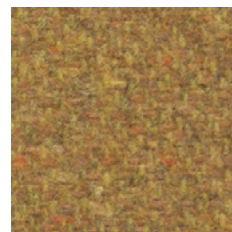
13DB25



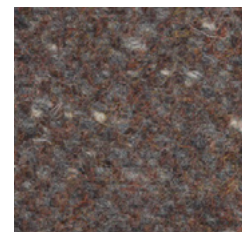
13DB31



13DB19



13DB40



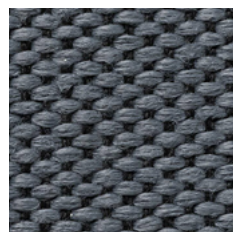
13DB43

## DW WILSON

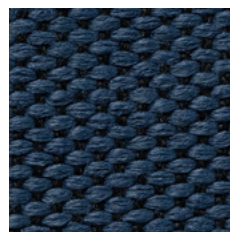
CAT. D

1. TESSUTO RICICLATO  
RECYCLED FABRIC
2. 100% POLIESTERE FR RICICLATO  
100% POLYESTER FR RECYCLED
3. 771 GR./MTL  
771 GR./LM
4. CLASSE 1 IM (UNI 9175) EN 1021 (PARTI 1-2)  
CLASS 1 IM (UNI 9175) EN 1021 (PART 1-2)
5. 80.000 CICLI (UNI EN ISO 12947)  
80.000 TURNS (UNI EN ISO 12947)

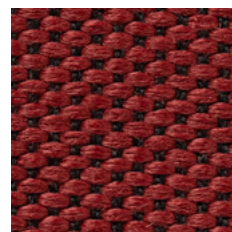
### CURA E MANUTENZIONE CARE AND MAINTENANCE



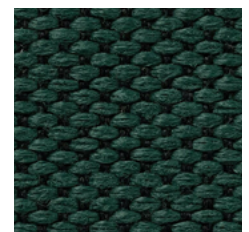
13DW12



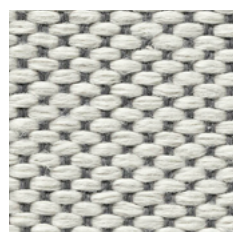
13DW36



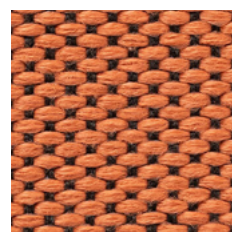
13DW34



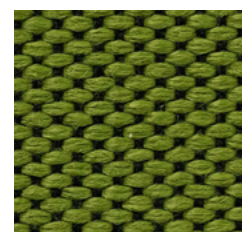
13DW05



13DW21



13DW50



13DW15

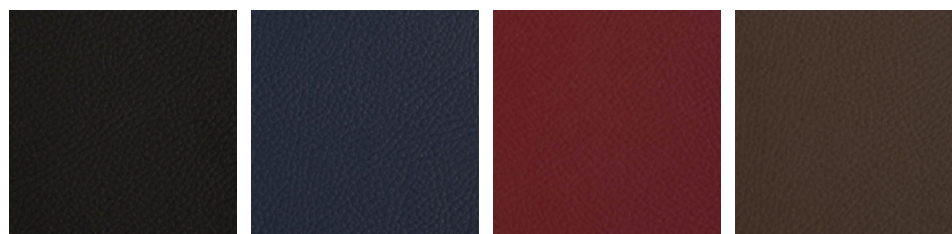


# HERITAGE AND INNOVATION

 **VAGHI**

PELLI, SIMILPELLI E RETI  
LEATHERS, VINYLs AND MESHES





13AG22

13AG46

13AG27

13AG98

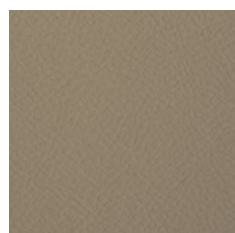


13AG21

13AG26

13AG07

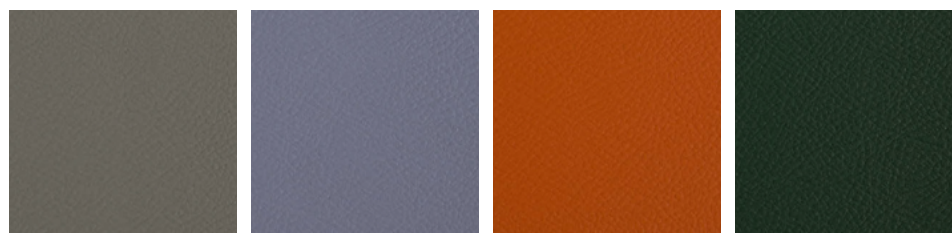
13AG48



13AG28



13AG68



13AG31

13AG29

13AG20

13AG05

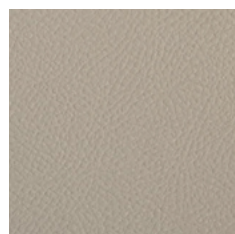


13AG71

13AG09

13AG50

13AG45



13AG00



13AG30

## AG GUATEMALA

CAT. A

1. SIMILPELLE  
VINYL
2. 88% PVC - 8% POLIESTERE - 4% COTONE  
88% PVC - 8% POLYESTER - 4% COTTON
3. 910 GR./MTL  
910 GR./LM
4. CLASSE 1 (UNI 9175)  
CLASS 1 (UNI 9175)
5. 100.000 CICLI (UNI EN ISO 12947)  
100.000 TURNS (UNI EN ISO 12947)

PRODOTTO PRIVO DI FTALATI  
PHTHALATE FREE

### CURA E MANUTENZIONE CARE AND MAINTENANCE





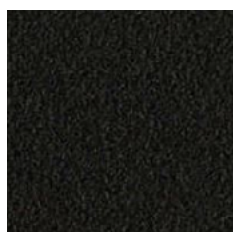
**BR RIO**

CAT. B

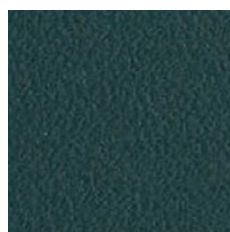
1. SIMILPELLE  
VINYL
2. 88% PVC - 1% POLIURETANO -  
7% POLIESTERE - 4% COTONE  
88% PVC - 1% POLYURETHANE -  
7% POLYESTER - 4% COTTON
3. 938 GR./MTL  
938 GR./LM
4. CLASSE 1 IM (UNI 9175) EN 1021 (PARTI 1-2)  
CLASS 1 IM (UNI 9175) EN 1021 (PART 1-2)
5. 100.000 CICLI (UNI EN ISO 12947)  
100.000 TURNS (UNI EN ISO 12947)

PRODOTTO PRIVO DI FTALATI  
PHTHALATE FREE

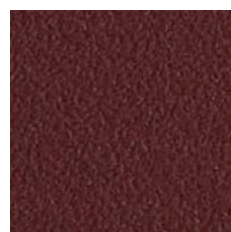
**CURA E MANUTENZIONE**  
CARE AND MAINTENANCE



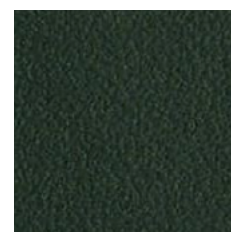
13BR02



13BR66



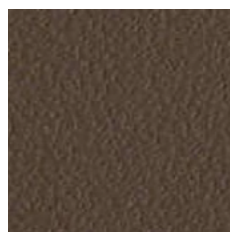
13BR34



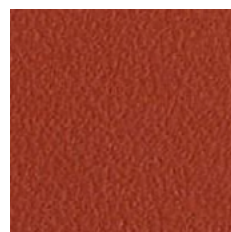
13BR05



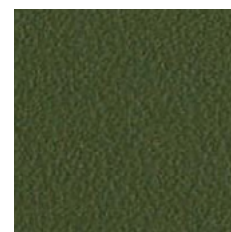
13BR71



13BR73



13BR77



13BR15



## EN PELLE NATURALE

CAT. E

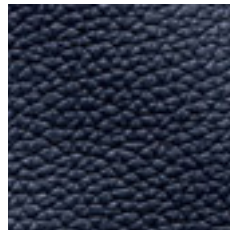
1. VERA PELLE BOVINA, CONCIATA AL CROMO, TINTA IN BOTTE ALL'ANILINA, SMERIGLIATA E RIFINITA CON RESINE POLIURETANICHE.  
OX HIDES, CHROME TANNAGE, ANILINE-DYED, BUFFED AND FINISHED WITH POLYURETHANE RESINS.
6. 0.9 / 1.0 MM

AVVERTENZA: LE IRREGOLARITÀ NATURALI DELLA PELLE, PUNTURE D'INSETTI, PICCOLE CICATRICI E VARIAZIONI DI COLORE CONFERMANO L'AUTENTICITÀ DEL MATERIALE, PERTANTO NON SONO MOTIVO DI RECLAMO.  
NOTICE: NATURAL FEATURES SUCH AS INSECT BITES, SMALL DEFORMITIES AND COLOR SHADING CONFIRM THE LEATHER'S AUTHENTIC CHARACTER AND ARE NOT GROUNDS FOR COMPLAINT.

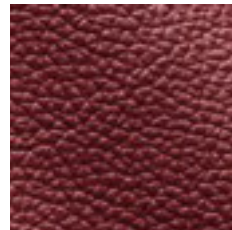
### CURA E MANUTENZIONE CARE AND MAINTENANCE



13EN22



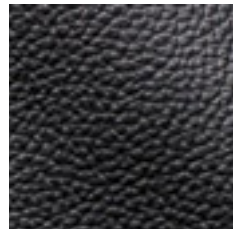
13EN46



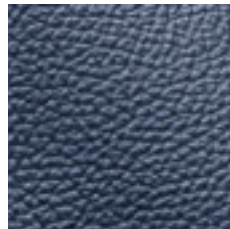
13EN27



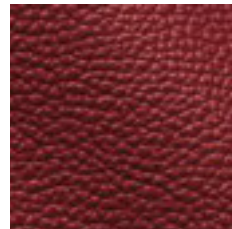
13EN98



13EN21



13EN26



13EN07



13EN48



13EN28



13EN68

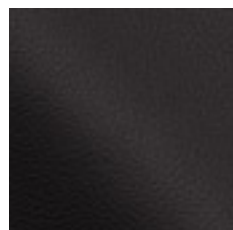
## FF PELLE FIORE

CAT. F

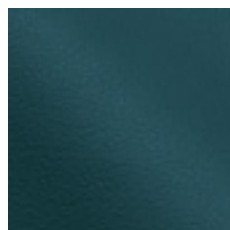
1. VERA PELLE BOVINA FIORE, CONCIATA AL CROMO, TINTA IN BOTTE ALL'ANILINA, GRANA NATURALE.  
OX HIDES, CHROME TANNAGE, ANILINEDYED, NATURAL GRAIN.
6. 1.3 / 1.5 MM

AVVERTENZA: LE IRREGOLARITÀ NATURALI DELLA PELLE, PUNTURE D'INSETTI, PICCOLE CICATRICI E VARIAZIONI DI COLORE CONFERMANO L'AUTENTICITÀ DEL MATERIALE, PERTANTO NON SONO MOTIVO DI RECLAMO.  
NOTICE: NATURAL FEATURES SUCH AS INSECT BITES, SMALL DEFORMITIES AND COLOR SHADING CONFIRM THE LEATHER'S AUTHENTIC CHARACTER AND ARE NOT GROUNDS FOR COMPLAINT.

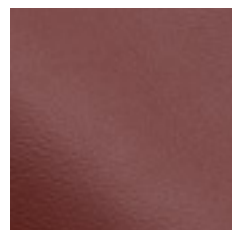
### CURA E MANUTENZIONE CARE AND MAINTENANCE



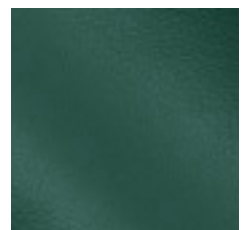
13FF02



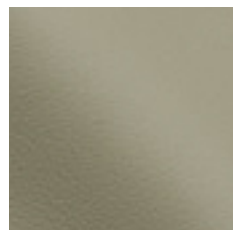
13FF66



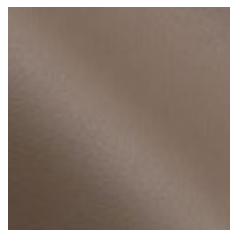
13FF34



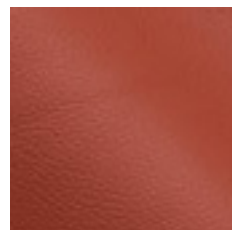
13FF05



13FF71



13FF73



13FF77



13FF15