

# HERITAGE AND INNOVATION

 **DAGHI**

FINITURE V.02

DIREZIONALI ~ EXECUTIVE	AG	AL	AR	BB	BL	BO	BR	CN	CT	DB	DW	EN	FF	RE	RP	RS
VIVA	•			•	•	•	•	•	•	•	•	•	•			
YALTA																•
EXPO.15 codici EX	•	•	•	•	•	•	•	•	•	•	•	•	•	•		•
EXPO 15 codici GX	•											•	•			
SUONI	•			•	•	•	•	•	•	•	•	•	•			
MODUS 150	•		•	•	•	•	•	•	•	•	•	•	•			
MAEVA	•		•	•	•	•	•	•	•	•	•	•	•			
UNION	•	•	•	•	•	•	•	•	•	•	•	•	•			
AQABA	•		•	•	•	•	•	•	•	•	•	•	•			
KIRUNA	•			•	•	•	•	•	•	•	•	•	•			
OPERATIVE ~ TASK	AG	AL	AR	BB	BL	BO	BR	CN	CT	DB	DW	EN	FF	RE	RP	RS
ASSIA EV	•	•	•	•	•	•	•	•	•	•	•	•	•	•		
EXPO codici QX/LX/LR	•	•	•	•	•	•	•	•	•	•	•	•	•	•		•
EXPO LIGHT codici IQ/IX/LI	•	•	•	•	•	•	•	•	•	•	•	•	•			
BURSA RETE EVOLUTION codici RE/RI/RB	•	•	•	•	•	•	•	•	•	•	•	•	•	•		
BURSA RETE EVOLUTION codici IE/II//IB		•	•	•	•	•			•	•						
BURSA AIR																•
BURSA RETE	•	•	•	•	•	•	•	•	•	•	•			•		
AVILA BURSA	•	•	•	•	•	•	•	•	•	•	•					
MOREA COMFORT	•	•	•	•	•	•	•	•	•	•	•	•	•			
LYBRA	•	•	•	•	•	•	•	•	•	•	•					
OSPITI ~ GUEST	AG	AL	AR	BB	BL	BO	BR	CN	CT	DB	DW	EN	FF	RE	RP	RS
LIBERA LC	•	•	•	•	•	•	•	•	•	•	•	•	•			
LIBERA SOFT	•	•	•	•	•	•	•	•	•	•	•	•	•			
GAIO	•	•	•	•	•	•	•	•	•	•	•	•	•			
WIZARD	•	•	•	•	•	•	•	•	•	•	•	•	•			
GIAVA	•	•	•	•	•	•	•	•	•	•	•	•	•			
MALTA CONTRACT	•	•	•	•	•	•	•	•	•	•	•					
101 RETE	•	•	•	•	•	•	•	•	•	•	•			•		
ATTESE ~ WAITINGS	AG	AL	AR	BB	BL	BO	BR	CN	CT	DB	DW	EN	FF	RE	RP	RS
DUAL	•	•	•	•	•	•	•	•	•	•	•	•	•			
TILOS	•	•	•	•	•	•	•	•	•	•	•	•	•			
VIVA BENCH	•	•	•	•	•	•	•	•	•	•	•	•	•			
MEWA	•	•	•	•	•	•	•	•	•	•	•	•	•			
OREOTTO LOUNGE	•	•	•	•	•	•	•	•	•	•	•	•	•			
MATIS	•	•	•	•	•	•	•	•	•	•	•	•	•			
ALIAS	•	•	•	•	•	•	•	•	•	•	•	•	•			
LIBERA LS	•	•	•	•	•	•	•	•	•	•	•	•	•			
LINEA TRE	•	•	•	•	•	•	•	•	•	•	•					
LINEA M	•	•	•	•	•	•	•	•	•	•	•					
QUICKSERVICE	AG	AL	AR	BB	BL	BO	BR	CN	CT	DB	DW	EN	FF	RE	RP	RS
AQABA QUICK	•															
EVO QUICK			•											•		
BURSA RETE QUICK			•											•		
BURSA QUICK			•													
T.R. QUICK			•													
T.R. 101 QUICK			•													
101 RETE QUICK			•											•		

• Disponibile Available



# LEGENDA CAPTION

## CURA E MANUTENZIONE CARE AND MAINTENANCE



Usare con regolarità l'aspirapolvere a beccuccio liscio.

- EN** Use the vacuum cleaner with smooth spout regularly.  
**FR** Utiliser régulièrement un aspirateur avec un embout souple.  
**ES** Utilizar con regularidad una aspiradora con boquilla suave.



Pulire con un panno umido, sciacquare con acqua ed asciugare accuratamente. Usare solo detergente neutro diluito in acqua.

- EN** Clean with a damp cloth, rinse with water and dry thoroughly. Use only mild detergent diluted in water.  
**FR** Nettoyer avec un chiffon humide, rincer à l'eau et sécher parfaitement. Utiliser seulement un détergent doux dilué dans l'eau.  
**ES** Limpiar con un paño húmedo, aclarar con agua y secar minuciosamente. Utilizar solamente detergente suave diluido en agua.



Pulire con un panno morbido asciutto.

- EN** Clean regularly with dry soft cloth.  
**FR** Nettoyer avec un chiffon doux et sec.  
**ES** Limpiar con un paño suave seco.



In caso di macchie utilizzare uno smacchiatore spray per tessuti.

- EN** In the event stains use a stain remover spray for textile.  
**FR** En cas de taches, utiliser un spray détachant pour textile.  
**ES** Para eliminar manchas, utilizar un quitamanchas textil en spray.



In caso di macchie utilizzare uno smacchiatore per pelli.

- EN** In case of spots use a spot removal spray for leathers.  
**FR** EN CAS DE TACHES, utiliser un spray détachant pour cuir.  
**ES** Para eliminar manchas, utilizar un quitamanchas para pelli.



Non usare sbiancanti al cloro.

- EN** Do not use chlorine bleach.  
**FR** Ne pas utiliser d'eau de Javel.  
**ES** No utilizar blanqueadores o lejía.



Non spazzolare.

- EN** Do not brush.  
**FR** Ne pas brosser.  
**ES** No cepillar.



Materiali riciclati.

- EN** Recycled fabric.  
**FR** Tissu recyclé.  
**ES** Tejido reciclado.

## DATI TECNICI TECHNICAL DATA

1. CARATTERISTICHE
2. COMPOSIZIONE
3. PESO
4. REAZIONE AL FUOCO
5. ABRASIONE
6. SPESSORE
7. PROVE SULLE SUPERFICI

- FR**
1. CARACTÉRISTIQUES
  2. COMPOSITION
  3. POIDS
  4. RÉACTION AU FEU
  5. ABRASION
  6. ÉPAISSEUR
  7. ESSAIS SUR LES SURFACES

- EN**
1. FEATURES
  2. COMPOSITION
  3. WEIGHT
  4. FIRE TEST
  5. ABRASION
  6. THICKNESS
  7. SURFACE TESTS

- ES**
1. CARACTERÍSTICAS
  2. COMPOSICIÓN
  3. PESO
  4. REACCIÓN AL FUEGO
  5. ABRASIÓN
  6. ESPESOR
  7. PRUEBAS DE SUPERFICIE

## AVVERTENZA NOTICE

I campioni illustrati in questo catalogo corrispondono agli originali. Eventuali differenze di colore sono dovute a motivi tecnici di stampa.

- EN** The sample colours pictured in this catalogue are representations of the originals. There could be slight colour differences due to the printing technique.  
**FR** Le reproduction photographique des échantillons de tissus et cuir de cette catalogue a été réalisée d'après des originaux. Toute différence de teinte éventuelle est à imputer au procédé d'impression.  
**ES** Las muestras impresas en este catalogo son copia de los originales. Las ligeras variaciones que puedan existir son debidas a la impresión.

Leggere variazioni nel colore dei rivestimenti rispetto al presente campionario sono da considerarsi normali e non possono essere motivo di reclamo.

- EN** Slight colour shading of the upholsteries when compared to the present sample chart are to be considered normal and are not grounds for complaint.  
**FR** Les revêtements peuvent présenter de légères différences de tonalité par rapport à la carte même et donc ne sont pas sujettes à réclamations.  
**ES** Los recubrimientos pueden tener ligeras diferencias de tono con respecto a la propia tarjeta y, por lo tanto, no están sujetos a reclamaciones.



garanzia  
5  
anni




CERTIFICAZIONE DI SISTEMA QUALITÀ  
DNV-GL  
ISO 9001



ISO 14001:2015  
LL-C (Certification)





# HERITAGE AND INNOVATION

 **VAGHI**

TESSUTI  
FABRICS



#### **AVVERTENZA NOTICE**

**Leggere variazioni nel colore dei rivestimenti rispetto al presente campionario sono da considerarsi normali e non possono essere motivo di reclamo.**

- EN** Slight colour shading of the upholsteries when compared to the present sample chart are to be considered normal and are not grounds for complaint.
- FR** Les revêtements peuvent présenter de légères différences de tonalité par rapport à la carte même et donc ne sont pas sujettes à réclamations.
- ES** Los recubrimientos pueden tener ligeras diferencias de tono con respecto a la propia tarjeta y, por lo tanto, no están sujetos a reclamaciones.



# LEGENDA CAPTION

## CURA E MANUTENZIONE CARE AND MAINTENANCE



**Usare con regolarità l'aspirapolvere a beccuccio liscio.**

- EN** Use the vacuum cleaner with smooth spout regularly.
- FR** Utiliser régulièrement un aspirateur avec un embout souple.
- ES** Utilizar con regularidad una aspiradora con boquilla suave.



**Pulire con un panno umido, sciacquare con acqua ed asciugare accuratamente. Usare solo detergente neutro diluito in acqua.**

- EN** Clean with a damp cloth, rinse with water and dry thoroughly. Use only mild detergent diluted in water.
- FR** Nettoyer avec un chiffon humide, rincer à l'eau et sécher parfaitement. Utiliser seulement un détergent doux dilué dans l'eau.
- ES** Limpiar con un paño húmedo, aclarar con agua y secar minuciosamente. Utilizar solamente detergente suave diluido en agua.



**Pulire con un panno morbido asciutto.**

- EN** Clean regularly with dry soft cloth.
- FR** Nettoyer avec un chiffon doux et sec.
- ES** Limpiar con un paño suave seco.



**In caso di macchie utilizzare uno smacchiatore spray per tessuti.**

- EN** In the event of stains, use a stain remover spray for textile.
- FR** En cas de taches, utiliser un spray détachant pour textile.
- ES** Para eliminar manchas, utilizar un quitamanchas textil en spray.



**In caso di macchie utilizzare uno smacchiatore per pelli.**

- EN** In the event of stains, use a stain remover spray for leathers.
- FR** En cas de taches, utiliser un spray détachant pour cuir.
- ES** Para eliminar manchas, utilizar un quitamanchas para pelli.



**Non usare sbiancanti al cloro.**

- EN** Do not use chlorine bleach.
- FR** Ne pas utiliser d'eau de Javel.
- ES** No utilizar blanqueadores o lejía.



**Non spazzolare.**

- EN** Do not brush.
- FR** Ne pas brosser.
- ES** No cepillar.



**Materiali riciclati.**

- EN** Recycled fabric.
- FR** Tissu recyclé.
- ES** Tejido reciclado.

## DATI TECNICI TECHNICAL DATA

1. CARATTERISTICHE
2. COMPOSIZIONE
3. PESO
4. REAZIONE AL FUOCO
5. ABRASIONE
6. SPESSORE

- EN** 1. FEATURES  
2. COMPOSITION  
3. WEIGHT  
4. FIRE TEST  
5. ABRASION  
6. THICKNESS
- FR** 1. CARACTÉRISTIQUES  
2. COMPOSITION  
3. POIDS  
4. RÉACTION AU FEU  
5. ABRASION  
6. ÉPAISSEUR

- ES** 1. CARACTERÍSTICAS  
2. COMPOSICIÓN  
3. PESO  
4. REACCIÓN AL FUEGO  
5. ABRASIÓN  
6. ESPESOR

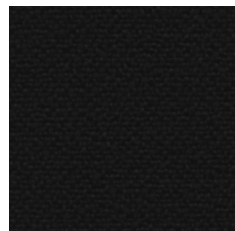


## AL LEIRIA

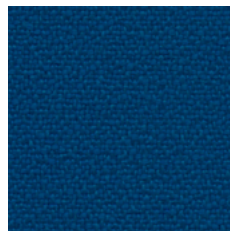
CAT. A

1. TESSUTO CREP RICICLATO  
RECYCLED FABRIC
2. 100% POLIESTERE FR RICICLATO  
100% POLYESTER FR RECYCLED
3. 350 GR./MTL  
350 GR./LM
4. CLASSE 1 (UNI 9175) EN 1021 (PARTI 1-2)  
CLASS 1 (UNI 9175) EN 1021 (PART 1-2)
5. 150.000 CICLI (UNI EN ISO 12947)  
150.000 TURNS (UNI EN ISO 12947)

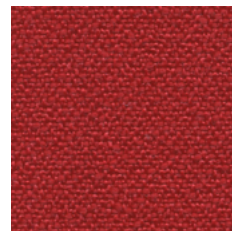
### CURA E MANUTENZIONE CARE AND MAINTENANCE



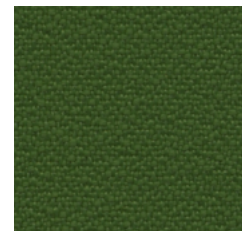
13AL02



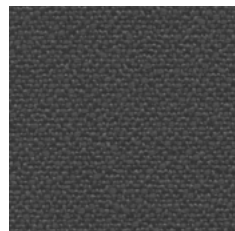
13AL36



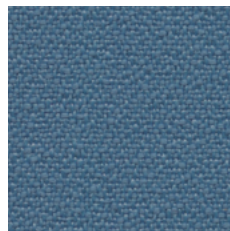
13AL07



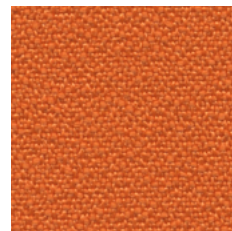
13AL35



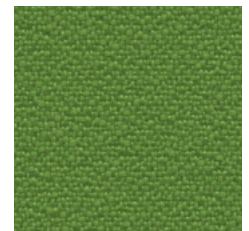
13AL12



13AL16



13AL20



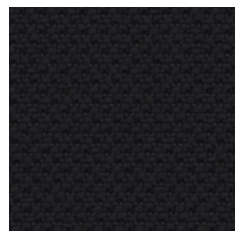
13AL05



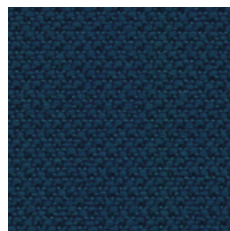
13AL41



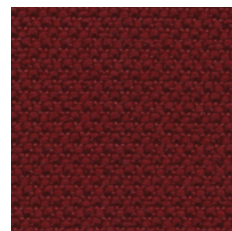
13AL13



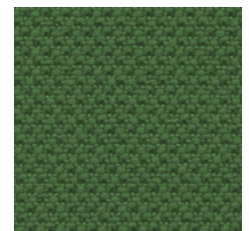
13AR02



13AR36



13AR34



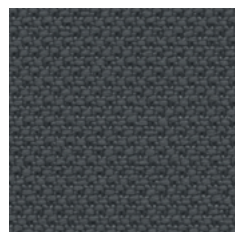
13AR35

## AR RADIO

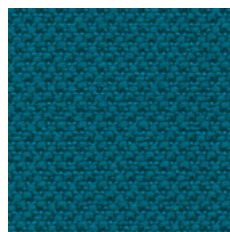
CAT. A

1. TELA  
CANVAS
2. 100% POLIESTERE FR  
100% POLYESTER FR
3. 450 GR./MTL  
450 GR./LM
4. EN 1021 (PARTI 1-2)  
EN 1021 (PART 1-2)
5. 100.000 CICLI (UNI EN ISO 12947)  
100.000 TURNS (UNI EN ISO 12947)

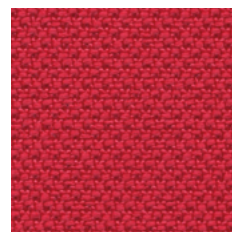
### CURA E MANUTENZIONE CARE AND MAINTENANCE



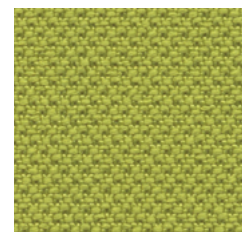
13AR52



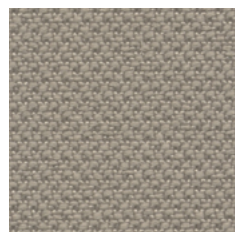
13AR26



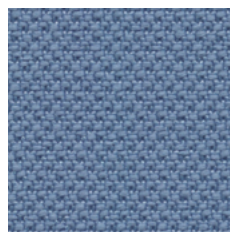
13AR17



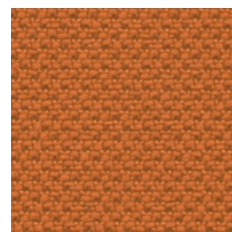
13AR45



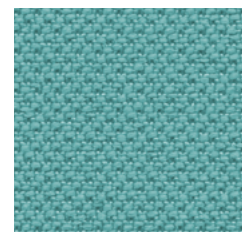
13AR13



13AR16



13AR40



13AR25



**BB BELEM** 

CAT. B

1. TESSUTO CREP RICICLATO  
RECYCLED FABRIC
2. 100% POLIESTERE FR RICICLATO  
100% POLYESTER FR RECYCLED
3. 390 GR./MTL  
390 GR./LM
4. CLASSE 1 IM (UNI 9175) EN 1021 (PARTI 1-2)  
CLASS 1 IM (UNI 9175) EN 1021 (PART 1-2)
5. 120.000 CICLI (UNI EN ISO 12947)  
120.000 TURNS (UNI EN ISO 12947)

**CURA E MANUTENZIONE**  
CARE AND MAINTENANCE

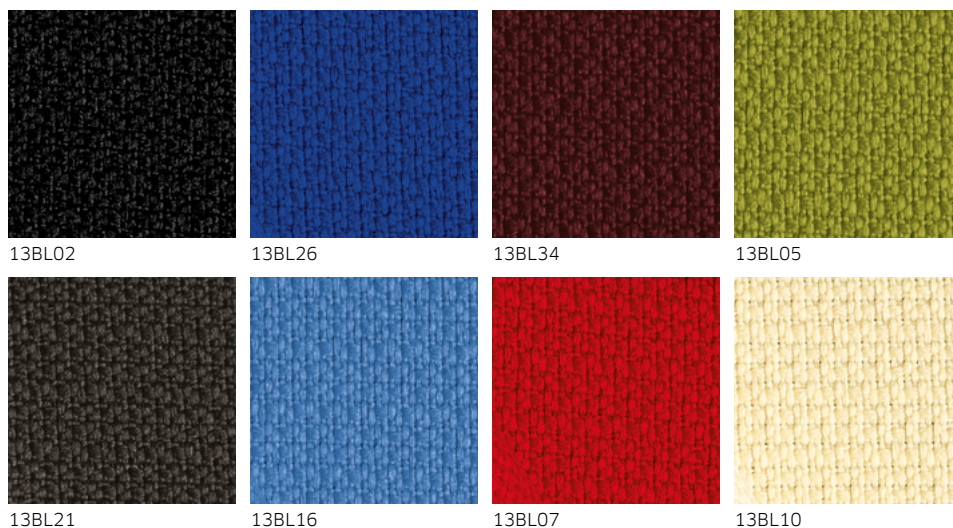


**BL LAGOS** 

CAT. B

1. TESSUTO A INTRECCI  
WEAVE FABRIC
2. 100% POLIESTERE FR RICICLATO  
100% POLYESTER FR RECYCLED
3. 470 GR./MTL  
470 GR./LM
4. CLASSE 1 (UNI 9175) EN 1021 (PARTI 1-2)  
CLASS 1 (UNI 9175) EN 1021 (PART 1-2)
5. 50.000 CICLI (UNI EN ISO 12947)  
50.000 TURNS (UNI EN ISO 12947)

**CURA E MANUTENZIONE**  
CARE AND MAINTENANCE

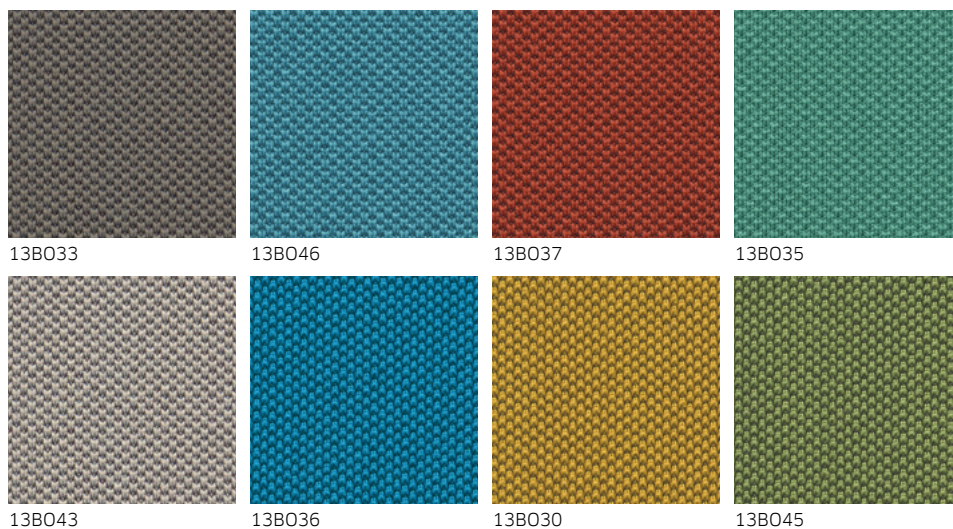


**BO OPORTO** 

CAT. B

1. TESSUTO RICICLATO A MAGLIA  
KNITTED RECYCLED FABRIC
2. 100% POLIESTERE FR RICICLATO  
100% POLYESTER FR RECYCLED
3. 525 GR./MTL  
525 GR./LM
4. CLASSE 1 IM (UNI 9175) EN 1021 (PARTI 1-2)  
CLASS 1 IM (UNI 9175) EN 1021 (PART 1-2)
5. 100.000 CICLI (UNI EN ISO 12947)  
100.000 TURNS (UNI EN ISO 12947)

**CURA E MANUTENZIONE**  
CARE AND MAINTENANCE



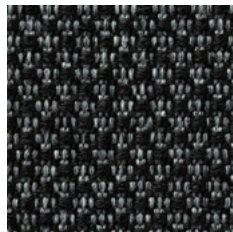


**CN NORFOLK** 

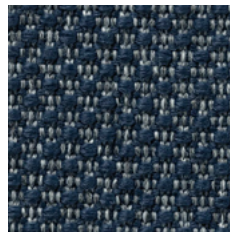
CAT. C

1. TESSUTO RICICLATO A NIDO D'APE  
ALL-OVER GRAPHIC GRID RECYCLED FABRIC
2. 100% POLIESTERE FR RICICLATO  
100% POLYESTER FR RECYCLED
3. 624 GR./MTL  
624 GR./LM
4. CLASSE 1 IM (UNI 9175) EN 1021 (PARTI 1-2)  
CLASS 1 IM (UNI 9175) EN 1021 (PART 1-2)
5. 70.000 CICLI (UNI EN ISO 12947)  
70.000 TURNS (UNI EN ISO 12947)

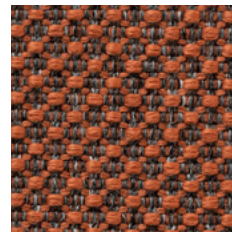
**CURA E MANUTENZIONE**  
CARE AND MAINTENANCE



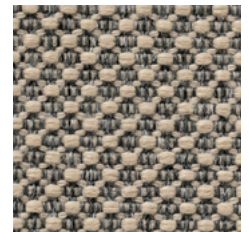
13CN12



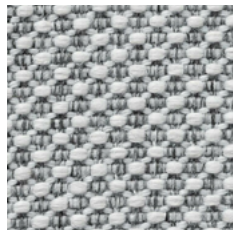
13CN26



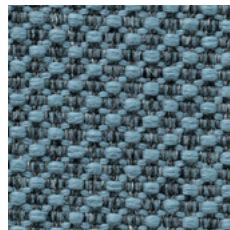
13CN17



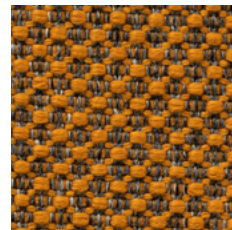
13CN13



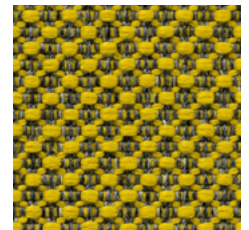
13CN21



13CN16



13CN20



13CN30

**CT TREVI** 

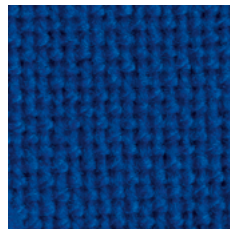
CAT. C

1. TELA  
CANVAS
2. 100% POLIESTERE TREVIRA CS  
100% POLYESTER TREVIRA CS
3. 630 GR./MTL  
630 GR./LM
4. CLASSE 1 (UNI 9175) EN 1021 (PARTI 1-2)  
CLASS 1 (UNI 9175) EN 1021 (PART 1-2)
5. 150.000 CICLI (UNI EN ISO 12947)  
150.000 TURNS (UNI EN ISO 12947)

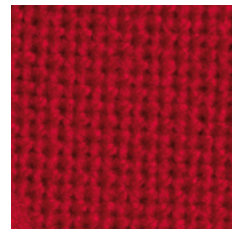
**CURA E MANUTENZIONE**  
CARE AND MAINTENANCE



13CT02



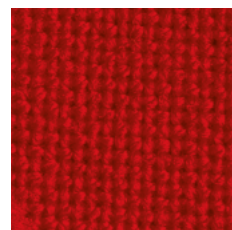
13CT16



13CT47



13CT32



13CT07

## DB BOGOTÀ MELANGE

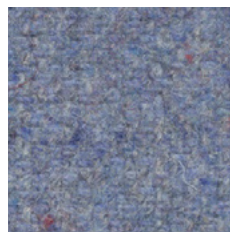
CAT. D

1. MISTO LANA CON 50% FIBRE RICICLATE  
WOOL BLEND WITH 50% OF RECYCLED FIBRES
2. 75% LANA - 20% POLIAMMIDE -  
5% ALTRE FIBRE  
75% WOOL - 20% POLYAMIDE -  
5% OTHER FIBRES
3. 590 GR./MTL  
590 GR./LM
4. CLASSE 1 IM (UNI 9175) EN 1021 (PARTI 1-2)  
CLASS 1 IM (UNI 9175) EN 1021 (PART 1-2)
5. 100.000 CICLI (UNI EN ISO 12947)  
100.000 TURNS (UNI EN ISO 12947)

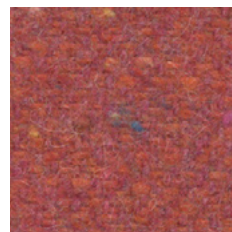
### CURA E MANUTENZIONE CARE AND MAINTENANCE



13DB21



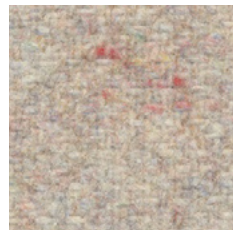
13DB16



13DB20



13DB25



13DB31



13DB19



13DB40



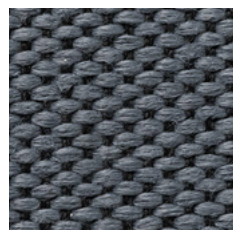
13DB43

## DW WILSON

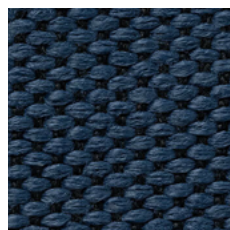
CAT. D

1. TESSUTO RICICLATO  
RECYCLED FABRIC
2. 100% POLIESTERE FR RICICLATO  
100% POLYESTER FR RECYCLED
3. 771 GR./MTL  
771 GR./LM
4. CLASSE 1 IM (UNI 9175) EN 1021 (PARTI 1-2)  
CLASS 1 IM (UNI 9175) EN 1021 (PART 1-2)
5. 80.000 CICLI (UNI EN ISO 12947)  
80.000 TURNS (UNI EN ISO 12947)

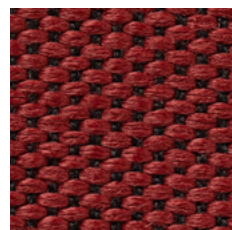
### CURA E MANUTENZIONE CARE AND MAINTENANCE



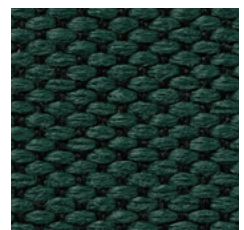
13DW12



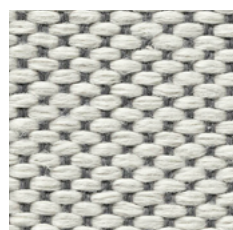
13DW36



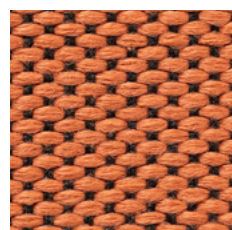
13DW34



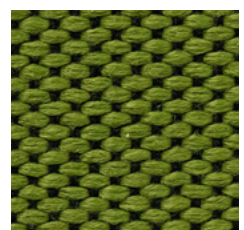
13DW05



13DW21



13DW50



13DW15

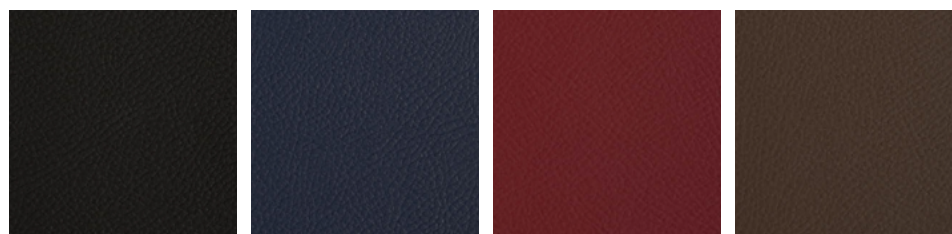


# HERITAGE AND INNOVATION

 **VAGHI**

PELLI, SIMILPELLI E RETI  
LEATHERS, VINYLs AND MESHES





13AG22

13AG46

13AG27

13AG98

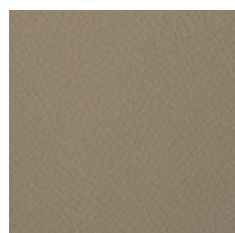


13AG21

13AG26

13AG07

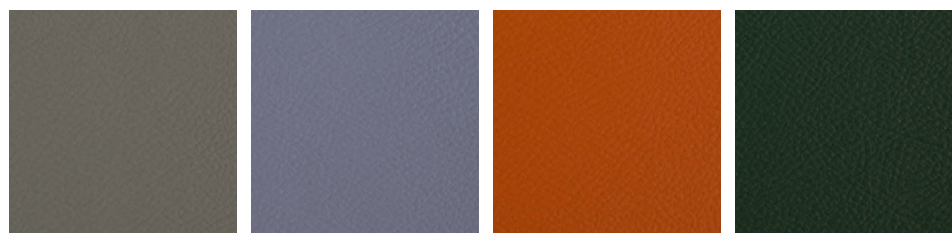
13AG48



13AG28



13AG68



13AG31

13AG29

13AG20

13AG05

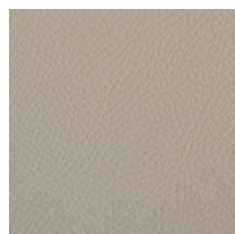


13AG71

13AG09

13AG50

13AG45



13AG00



13AG30

## AG GUATEMALA

CAT. A

1. SIMILPELLE  
VINYL
2. 88% PVC - 8% POLIESTERE - 4% COTONE  
88% PVC - 8% POLYESTER - 4% COTTON
3. 910 GR./MTL  
910 GR./LM
4. CLASSE 1 (UNI 9175)  
CLASS 1 (UNI 9175)
5. 100.000 CICLI (UNI EN ISO 12947)  
100.000 TURNS (UNI EN ISO 12947)

PRODOTTO PRIVO DI FTALATI  
PHTHALATE FREE

### CURA E MANUTENZIONE CARE AND MAINTENANCE





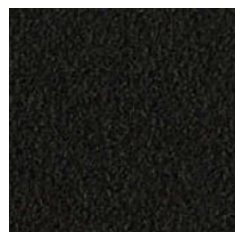
**BR RIO**

CAT. B

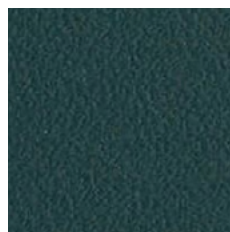
1. SIMILPELLE  
VINYL
2. 88% PVC - 1% POLIURETANO -  
7% POLIESTERE - 4% COTONE  
88% PVC - 1% POLYURETHANE -  
7% POLYESTER - 4% COTTON
3. 938 GR./MTL  
938 GR./LM
4. CLASSE 1 IM (UNI 9175) EN 1021 (PARTI 1-2)  
CLASS 1 IM (UNI 9175) EN 1021 (PART 1-2)
5. 100.000 CICLI (UNI EN ISO 12947)  
100.000 TURNS (UNI EN ISO 12947)

PRODOTTO PRIVO DI FTALATI  
PHTHALATE FREE

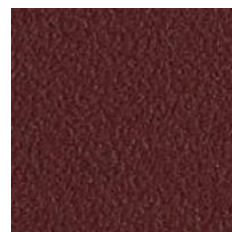
**CURA E MANUTENZIONE**  
CARE AND MAINTENANCE



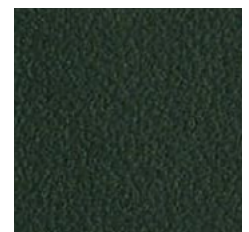
13BR02



13BR66



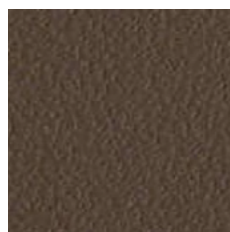
13BR34



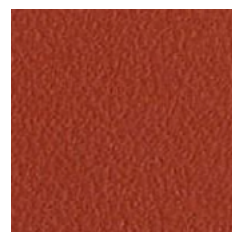
13BR05



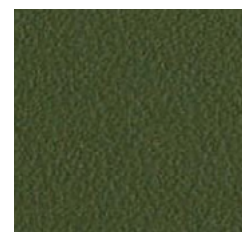
13BR71



13BR73



13BR77



13BR15

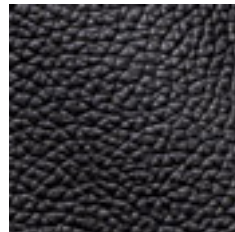
## EN PELLE NATURALE

CAT. E

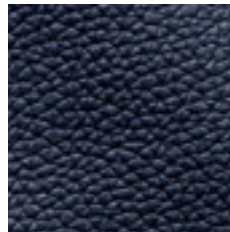
1. VERA PELLE BOVINA, CONCIATA AL CROMO, TINTA IN BOTTE ALL'ANILINA, SMERIGLIATA E RIFINITA CON RESINE POLIURETANICHE.  
OX HIDES, CHROME TANNAGE, ANILINE-DYED, BUFFED AND FINISHED WITH POLYURETHANE RESINS.
6. 0.9 / 1.0 MM

AVVERTENZA: LE IRREGOLARITÀ NATURALI DELLA PELLE, PUNTURE D'INSETTI, PICCOLE CICATRICI E VARIAZIONI DI COLORE CONFERMANO L'AUTENTICITÀ DEL MATERIALE, PERTANTO NON SONO MOTIVO DI RECLAMO.  
NOTICE: NATURAL FEATURES SUCH AS INSECT BITES, SMALL DEFORMITIES AND COLOR SHADING CONFIRM THE LEATHER'S AUTHENTIC CHARACTER AND ARE NOT GROUNDS FOR COMPLAINT.

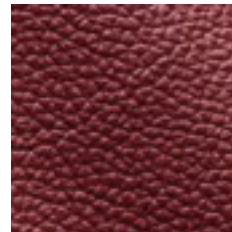
### CURA E MANUTENZIONE CARE AND MAINTENANCE



13EN22



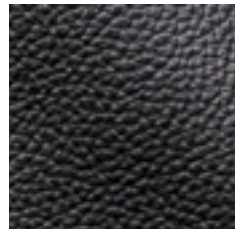
13EN46



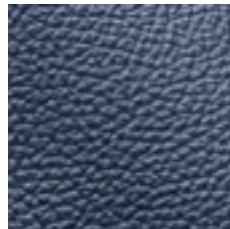
13EN27



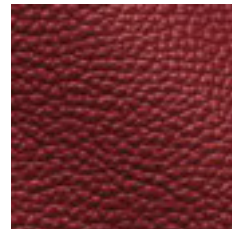
13EN98



13EN21



13EN26



13EN07



13EN48



13EN28



13EN68

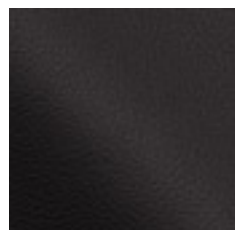
## FF PELLE FIORE

CAT. F

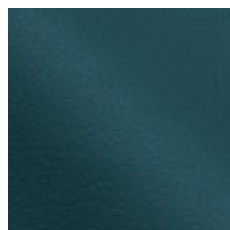
1. VERA PELLE BOVINA FIORE, CONCIATA AL CROMO, TINTA IN BOTTE ALL'ANILINA, GRANA NATURALE.  
OX HIDES, CHROME TANNAGE, ANILINEDYED, NATURAL GRAIN.
6. 1.3 / 1.5 MM

AVVERTENZA: LE IRREGOLARITÀ NATURALI DELLA PELLE, PUNTURE D'INSETTI, PICCOLE CICATRICI E VARIAZIONI DI COLORE CONFERMANO L'AUTENTICITÀ DEL MATERIALE, PERTANTO NON SONO MOTIVO DI RECLAMO.  
NOTICE: NATURAL FEATURES SUCH AS INSECT BITES, SMALL DEFORMITIES AND COLOR SHADING CONFIRM THE LEATHER'S AUTHENTIC CHARACTER AND ARE NOT GROUNDS FOR COMPLAINT.

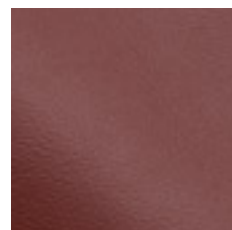
### CURA E MANUTENZIONE CARE AND MAINTENANCE



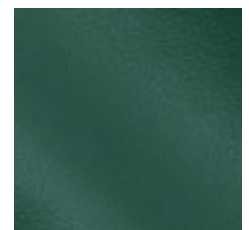
13FF02



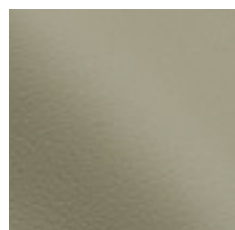
13FF66



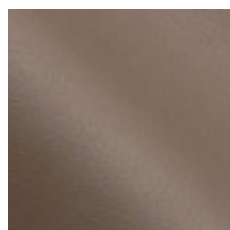
13FF34



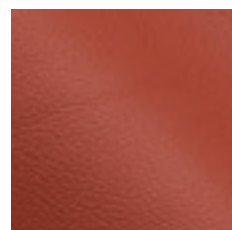
13FF05



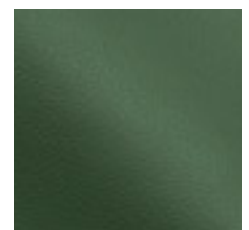
13FF71



13FF73



13FF77



13FF15



## RE RETE

CAT. RE

\*

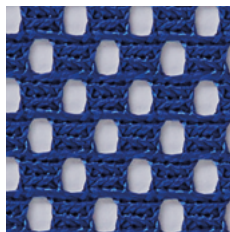
1. TESSUTO TECNICO / TECHNICAL FABRIC
2. 100% POLIESTERE / 100% POLYESTER
3. 430 GR./MTL  
430 GR./LM
4. CLASSE 1 (UNI 9175) SOLO PER 13R1IM  
CLASS 1 (UNI 9175) ONLY FOR 13R1IM
5. 100.000 CICLI (UNI EN ISO 12947)  
100.000 TURNS (UNI EN ISO 12947)

DISPONIBILE PER / AVAILABLE FOR  
EXPO 15 - ASSIA EV - EXPO LIGHT -  
BURSA RETE EVO - BURSA RETE

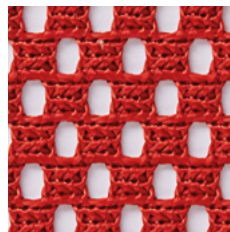
### CURA E MANUTENZIONE CARE AND MAINTENANCE



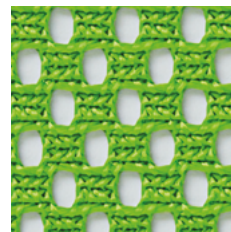
13RETE



13RE\_W



13RE\_R



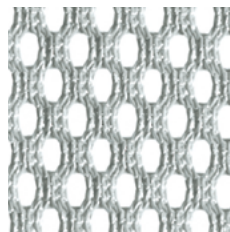
13RETV



13RE\_M



13RE\_P



13RE\_G



13RE\_B

\* Per rete ignifuga usare codice 13R1IM - colore nero | For fireproof mesh please use code 13R1IM - black colour

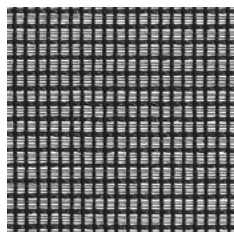
## RS RETE

CAT. RS

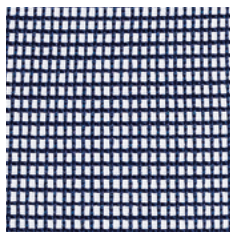
1. TESSUTO TECNICO / TECHNICAL FABRIC
2. 97% POLIESTERE - 2% POLIAMMIDE -  
1% ELASTHAN  
97% POLYESTER - 2% POLYAMIDE -  
1% ELASTHAN
3. 370 GR./MTL  
370 GR./LM
4. UNI 1021 (PARTE1)  
UNI 1021 (PART 1)
5. 30.000 CICLI (UNI EN ISO 12947)  
30.000 TURNS (UNI EN ISO 12947)

DISPONIBILE PER / AVAILABLE FOR  
EXPO 15 - EXPO LIGHT

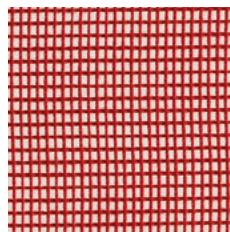
### CURA E MANUTENZIONE CARE AND MAINTENANCE



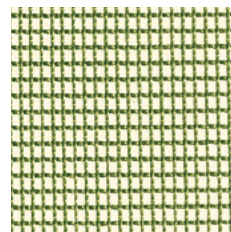
13RS02



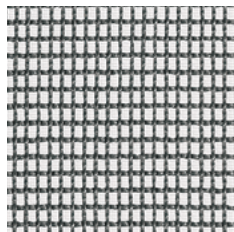
13RS06



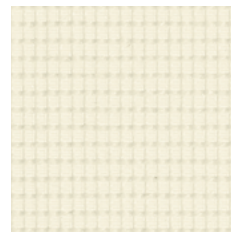
13RS07



13RS05



13RS21



13RS00

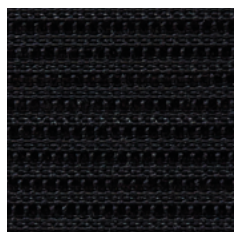
## RP RETE PORTANTE

CAT. RP

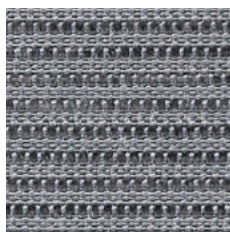
1. TESSUTO TECNICO / TECHNICAL FABRIC
2. 100% POLIESTERE FR / 100% POLYESTER FR
3. 420 GR./MTL  
420 GR./LM
4. CLASSE 1 (UNI 9175)  
CLASS 1 (UNI 9175)
5. 20.000 CICLI (UNI EN ISO 12947)  
20.000 TURNS (UNI EN ISO 12947)

DISPONIBILE PER / AVAILABLE FOR  
YALTA - BURSA AIR

### CURA E MANUTENZIONE CARE AND MAINTENANCE



13RP22



13RP21





# HERITAGE AND INNOVATION

 **VAGHI**

SUPERFICI  
SURFACES



## SUPERFICI SERIE LIBERA ~ SURFACES LIBERA SERIES

### PLASTICA IGNIFUGA FIREPROOF PLASTIC

1. POLIPROPILENE FR CARICATO CON FV  
POLYPROPYLENE FR WITH FV
7. UNI 10782

#### CURA E MANUTENZIONE CARE AND MAINTENANCE



ANTRACITE  
ANTHRACITE



TORTORA  
DOVE GREY RAL 1019



BIANCO  
WHITE RAL 9003



GRIGIO-BLU AVIO  
AZURE-GREY RAL 5014



ROSSO MARRONE  
RED BROWN RAL 8029



VERDE OLIVA  
OLIVE GREEN RAL 6003

### PLASTICA PCR PLASTIC PCR

\*\*

1. POLIPROPILENE DA RICICLO POST CONSUMO  
POST-CONSUMER RECYCLED POLYPROPYLENE
7. UNI 10782

#### CURA E MANUTENZIONE CARE AND MAINTENANCE



GRIGIO CEMENTO  
CONCRETE GREY RAL 9006

### METALLO METAL

\*

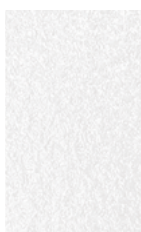
#### VERNICIATO PAINTED METAL

1. POLVERI EPOSSI-POLIESTERE  
TERMOINDURENTI APPLICATE  
ELETTROSTATICAMENTE, SPESSORE  
70/90 µ, GLOSS 2-10, FINITURA  
BUCCIATA ANTIGRAFFIO.  
EPOXY-POLYESTER THERMOSETTING  
POWDERS ELECTROSTATICALLY FIXED,  
THICKNESS 70/90 µ, GLOSS 2-10,  
ANTI-SCRATCH EMBOSSED FINISH.
7. UNI EN ISO 9227

#### CURA E MANUTENZIONE CARE AND MAINTENANCE



NERO  
BLACK



BIANCO  
WHITE  
RAL 9016



TORTORA  
DOVE GREY  
RAL 1019



VERDE OLIVA  
OLIVE GREEN  
RAL 6003



GRIGIO-BLU AVIO  
AZURE-GREY  
RAL 5014

#### CROMATO CHROMED-PLATED METAL

1. TRATTAMENTO GALVANICO  
CON APPLICAZIONE DI NICHEL  
E CROMO, SPESSORE 30/50 µ,  
FINITURA LUCIDA.  
NICKEL AND CHROMIUM  
PLATING FIXED WITH  
GALVANIC TREATMENT,  
THICKNESS 30/50 µ,  
GLOSSY FINISH.
7. UNI 10782

#### CURA E MANUTENZIONE CARE AND MAINTENANCE



CROMATO  
CHROMED

## PLASTICA PLASTIC

\*

1. POLIPROPILENE O POLIAMMIDE,  
TRATTAMENTO SUPERFICIALE GOFFRATO  
ANTIGRAFFIO  
POLYPROPYLENE OR POLYAMIDE,  
ANTI-SCRATCH EMBOSSED FINISH
7. UNI 10782

### CURA E MANUTENZIONE CARE AND MAINTENANCE



NERO  
BLACK



GRIGIO  
GREY RAL 7040



BIANCO  
WHITE RAL 9003

## METALLO METAL

\*

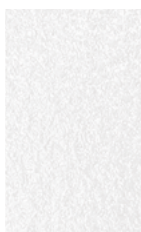
### VERNICIATO PAINTED METAL

1. POLVERI EPOSSI-POLIESTERE  
TERMOINDURENTI APPLICATE  
ELETTROSTATICAMENTE, SPESSORE  
70/90 µ, GLOSS 2-10, FINITURA  
BUCCIATA ANTIGRAFFIO.  
EPOXY-POLYESTER THERMOSETTING  
POWDERS ELECTROSTATICALLY FIXED,  
THICKNESS 70/90 µ, GLOSS 2-10,  
ANTI-SCRATCH EMBOSSED FINISH.
7. UNI EN ISO 9227

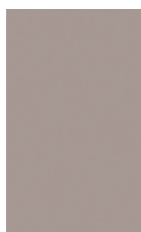
### CURA E MANUTENZIONE CARE AND MAINTENANCE



NERO  
BLACK



BIANCO  
WHITE  
RAL 9016



TORTORA  
DOVE GREY  
RAL 1019



GRIGIO ARGENTO  
SILVER GREY  
RAL 9006

### CROMATO CHROMED-PLATED METAL

1. TRATTAMENTO GALVANICO  
CON APPLICAZIONE DI NICHEL  
E CROMO, SPESSORE 30/50 µ,  
FINITURA LUCIDA.  
NICKEL AND CHROMIUM  
PLATING FIXED WITH  
GALVANIC TREATMENT,  
THICKNESS 30/50 µ,  
GLOSSY FINISH.
7. UNI 10782

### CURA E MANUTENZIONE CARE AND MAINTENANCE



CROMATO  
CHROMED

### NOTE NOTES

- \* I colori disponibili per ogni linea di prodotto sono elencati nel catalogo generale e nel listino prezzi.  
The available colours for each product line are listed in the general catalogue and in the price list.
- \*\* Il colore GRIGIO CEMENTO è disponibile solo per i modelli della serie LIBERA con scocca senza braccioli.  
CONCRETE GREY colour is available only for LIBERA models with plastic shell without armrests.
- \*\*\* Colori disponibili per serie LIBERA cod: LI10,LC10,LI20 e LC20  
Colours available for LIBERA codes: LI10,LC10, LI20 and LC20.



**AVVERTENZA NOTICE**

**I campioni illustrati in questo catalogo corrispondono agli originali. Eventuali differenze di colore sono dovute a motivi tecnici di stampa.**

- EN** The sample colours pictured in this catalogue are representations of the originals. There could be slight colour differences due to the printing technique.
- FR** Le reproduction photographique des échantillons de tissus et cuir de cette catalogue a été réalisée d'après des originaux. Toute différence de teinte éventuelle est à imputer au procédé d'impression.
- ES** Las muestras impresas en este catalogo son copia de los originales. Las ligeras variaciones que puedan existir son debidas a la impresión

# VAGHI.COM

via Brughetti 16/18 20813 Bovisio Masciago (MB)  
+39 0362 591404 [info@vaghi.com](mailto:info@vaghi.com)